

[Museums]
[Australia]

.....
Annual
Report
2011



Australian Government

Museums Australia operates with the kind support of the Australian Government, Museum of Australian Democracy at Old Parliament House, National Museum of Australia, ICOM Australia, and Link Digital, as well as individual members who have made generous donations.

Museums Australia Incorporated

PO Box 266
CIVIC SQUARE ACT 2608

Telephone	02 6230 0346
Facsimile	02 6230 0360
ABN	83 048 139 955

Auditor

AccountAbility

PO Box 776
Mitchell ACT 2911

Telephone	0407 407 776
ABN	65 119 369 827

Designed by Selena Kearney
Printed by BlueStar Print, Canberra

All images in this Museums Australia Annual Report 2011 have been sourced and reproduced with the permission of the owner/s. If you have any questions about the images reproduced herein, please contact the Museums Australia National Office on 02 6230 0346.

.....
Table of Contents

National President's Introduction	4
National Director's Introduction	5
National Council 2011—2013	6
About Museums Australia	6
Branches	10
National Networks	16
Advocacy	18
Membership	19
Events	22
Awards	24
Communications	26
Partnerships	27
Institutional Members	28

National President's Introduction

On behalf of the National Council of Museums Australia (MA) I am pleased to present the Annual Report for 2011.

Strategic planning

The MA Council's Strategic Plan for 2012-2015 has provided a framework for short- and long-term implementation of the continuing Mission and Vision of MA, while also focusing on specific objectives and desired performance outcomes to strengthen MA as an organisation, both in terms of member services and achieving a sustainable financial position for the future of the organisation.

Sector-wide services

MA is acutely conscious of the need for continuity of services and advocacy for the sector. MA continues to advance sector-wide collaboration across institutions and member bodies that touch on a broad range of policy and social issues: notably cultural heritage; the environment; education; research; Indigenous issues; cultural diversity and creativity as positive platforms for nation-building; the socio-economic development of communities through cultural heritage, local identity and tourism; and the health and wellbeing of communities, given MA's unique geographical footprint across the country.

Advocacy

MA has prepared five major submissions in 2011 to federal inquiries or consultations on key issues affecting the sector. We have been communicating regularly with officers of the Australian government's Office for the Arts (OFTA), to ensure liaison and advocacy on cultural and museums sector issues at a federal level. Our State and Territory Branches have taken opportunities both for advocacy on specific matters within various jurisdictions, as well as pursuing opportunities to make direct connections with key national issues in arts and cultural heritage debates across the country.

Museum Metadata Exchange (MME) project

In 2011 the MME (Museum Metadata Exchange) collections digitisation project – a jointly auspiced project in partnership with CAMD (Council of Australasian Museum Directors) – was brought to completion under the terms of a grant provided by the Australian National Data Service (ANDS). The MME

project was long envisaged as achieving a nationally accessible platform for access to museums' collection-level data, to be more readily available to researchers and the public.

MA National Conference

Realisation of an outstanding 2011 MA National Conference (held in Perth, from 15-18 November 2011) was a peak event and highlight for the sector.

MA has now moved forward on long-range Conference planning. Strong planning is already moving concurrently on conferences in Adelaide (September 2012); Canberra (May 2013); and Launceston (likely also in May, 2014).

In relation to government support for the 2011 Conference, I particularly acknowledge the federal Office for the Arts (OFTA) for the special-purpose grant that enabled bursaries and remote-area participation in the very successful Regional + Remote Program of training workshops that has become a regular addition to the MA National Conference.

Partnerships

There continues to be a strong working relationship between ICOM Australia and MA, especially focused on fostering museum partnerships across the Asia-Pacific region. MA also continues to be a supporting partner to Blue Shield Australia in disaster preparedness planning and relief measures for museums and cultural heritage bodies in situations of natural disaster.

My final remarks are to convey to the MA membership that I will step down as National President at the 2012 AGM. It has been a pleasure and honour for three years to lead such an important national body for the museums sector. At Council's invitation, Mr Andrew Sayers AM, Director of the National Museum of Australia, will now assume the role of MA National President at the 2012 AGM. I have every confidence, on your behalf, in Andrew Sayers' leadership of MA in the next year, and his membership of CAMD will undoubtedly strengthen important sectoral links and stakeholder partnerships in the year ahead.



A handwritten signature in dark ink, appearing to read 'David Morgan'.

National Director's Introduction

Throughout the pages of the Annual Report that follow, members and other readers will find both a broad overview and performance account for Museums Australia for the calendar year 2011, as well as some finer detailing of the work of the national association throughout this year.

On behalf of the National Office, now located within the National Museum of Australia (having moved from Old Parliament House in October 2011), brief highlights of achievements in 2011 include the following key changes in activities programs or services provision for the museums sector through the resources and agency of Museums Australia:

- Continuing upgrade and improvement in service functions (for all State/Territory branches, Networks and divisions) of the national MA Website;
- Ongoing review of MA's 22 National Networks (for specialist areas of museum work), and pursuit of a variety of member feedback surveys, forming the basis of an improved membership strategy for the association;
- Continued improvement of the quarterly MA Magazine and production system, its full public accessibility (including electronic access) with each new issue released; and an affirmative balance of content across different thematic areas, from capital city institutions to regional and volunteer-run museums, and affirmatively targeting regular inclusion of Indigenous subjects and colleagues, as well as regional and remote subjects and colleagues;
- Development of the social networking site <maNexus> to facilitate increased and more informal styles of communication suited to specific constituency needs; some reviewed National Networks (having been shown to have low capability for events delivery in a year) have been reconsidered by National Council as better maintained on the <maNexus> site to promote discussion groups and interaction among relevant groups of common interest - which needs closer attention in 2012;

- Continued production of MA Jobs Bulletins, as requested, which remain one of the key organs for broadcast of professional employment vacancies and opportunities nationally; further service improvement was achieved through a publicly visible Jobs Bulletin Board calendar, maintained while positions are still open - which increases value for institutions advertising to fill vacancies, since it broadcasts to any visitors to MA'S website (not simply members);
- Continued partnership with the Australian National Committee (ICOM Australia) of the International Council of Museums (ICOM, Paris), to project the international associations and developmental paths for Australian colleagues accessing contacts with museums sector partners internationally; the ICOM Australia partnership, and promotion of international events through ICOM's 31 International Committees, is a regular strand of both Museums Australia's Magazine and e-Bulletin communication channels; Museums Australia has continued to administer the annual subscriptions and renewals for ICOM memberships;
- Advocacy on national issues affecting the museums sector: Museums Australia made strong and often detailed submissions to a number of federal government inquiries or policy consultations.

Further information about the work of Museums Australia in 2011 will be found in the various sections of this Report and on the MA website <www.museumsaustralia.org.au>



A handwritten signature in black ink that reads "Bonnie L. Murphy".

National Council 2011–2013

Executive

PRESIDENT

Dr Darryl McIntyre FAIM

(Retired CEO, National Film and Sound Archive, Canberra)

VICE-PRESIDENT

Belinda Cotton

(Head, Travelling Exhibitions, National Gallery of Australia, Canberra)

TREASURER

Suzanne Bravery

(Manager, Grainger Museum, University of Melbourne)

SECRETARY

William (Bill) Storer

(previously: President, MA-NSW; Chair, Community Museums National Network; Newcastle)

Ordinary Members

Belinda Nemeč

(Museum consultant, Melbourne)

Meredith Blake

(Research Fellow, RMIT University, Melbourne)

Rebekah Butler

(Executive Director, Museum & Gallery Services Queensland, Brisbane)

Richard Mulvaney

(Director, Queen Victoria Museum & Art Gallery, Launceston)

Robert Heather

(Event & Exhibition Manager, State Library of Victoria, Melbourne)

Soula Veyradier

(Curator, City of Melville Museum & Local History Service, Booragoon, WA)

EX-OFFICIO MEMBER

Frank Howarth

(Chair, ICOM Australia), Director, Australian Museum

PUBLIC OFFICER

Dr Don McMichael CBE

About Museums Australia

Background

Museums Australia (MA) was established in January 1994, arising from a planned decision to merge a number of separate museums associations long existing in Australia. A convergent desire emerged in the 1990s to strengthen the museums sector nationally (in its services delivery, policies, programs, training and interface with government): to pursue convergent objectives on a collaborative basis through one strong national body, with both institutional as well as individual membership supporting and providing direct expertise and input for the museums and galleries sector nationally.

MA draws individual and institutional resources as well as significant government and private sector support across some State/Territory jurisdictions (most strongly in Victoria and Western Australia), to support the development of museums and galleries across Australia and the communities they serve.

Scope

Museums Australia members resource, shape, provide expertise and input to ensure a dynamic national membership, development and services-delivery body, working through a constellation of eight State and Territory Branches, 18 sub-S/T Chapters, 23 specialist National Networks (previously Special Interest Groups), and supported in national administration and coordination by the MA National Office (located in Canberra).

Mission

Museums Australia is the national organisation of museums, galleries and museum professionals committed to the conservation, continuation and communication to all Australians of our national and cultural heritage, present and future, tangible and intangible.

As a non-government, non-profit body, Museums Australia promotes professional and ethical standards, facilitates training, advances knowledge, addresses issues, and raises public awareness through its national and international networks.

Values

- MA champions its membership and the museums sector as resources for social development, based on equality of opportunity and support for intellectual, cultural and social diversity.
- MA promotes an understanding of heritage as including natural and cultural, tangible and intangible dimensions. Heritage is conserved through particular objects and people, sites and places, events and narratives, music and performance, song, dance, scientific research, history and other human activities that convey knowledge and bear cultural meaning.
- MA affirms that governments and communities share responsibility to support and resource the conservation and communication of the nation's heritage.
- MA believes that the distinctive work museums and galleries pursue in conjunction with communities in preservation, research, interpretation, education and public programming is critical to the conservation of the nation's memory.
- MA recognises Australia's Indigenous peoples as the nation's First Peoples and is committed to ensuring that Indigenous people have control and management of their cultural heritage and are active participants in any interpretation to the wider community.
- MA supports ICOM's Australian National Committee – as MA's 'international committee' – which offers important resources for extending the national museum sector's contacts and access to international networks for professional development, partnerships and exchange.

National Association Funding

The work of the Association is primarily enabled through its members (large and small Institutional Members as well as Individual Members.) Membership fees support the Association's activities across all States and Territories.

In 2011, MA National Office was granted 3-year funding provision through the 2008/09 round of multi-year Grants to Voluntary Environment and Heritage Organisations (GVEHO) program, administered by the then Department of the Environment, Heritage, Water and the Arts (DEWHA). The GVEHO grant provided up to \$30,000 annually to assist coverage of administrative costs of the national association for the three-year period ending in June 2011.

ICOM Australia partnership and resource-sharing:

MA also received some secretariat funding from ICOM Australia, to assist the close partnership whereby MA administers ICOM membership and renewals for the Australian National Committee of ICOM (the International Council of Museums, headquartered in Paris).

Museums Australia (Victoria) and Museums Australia (WA) are meanwhile substantially funded through their state governments to provide services to the museums and galleries within their respective states.

Governance Framework and Organisational Structure

The MA National Council, supported by the MA National Office (MANO), oversees the development of operations, policies, services, national strategy and advocacy, to advance the agreed aims of the organisation.

Governance of MA as an Association is conducted in accordance with the Museums Australia Constitution and By-Laws, including some modifications for Museums Australia Divisions that were adopted in 2004, with subsequent minor amendments by Council in 2008.

National Council Standing Committees

Active National Council Standing Committees operating in 2011 covered Membership and Publications. A new Standing Committee for National Awards will be established in early 2012.

Management and Accountability

Museums Australia

- Respects the work of all parts of the organisation and will avoid unnecessary duplication.
- Is committed to effective liaison and communication within the organisation.
- Promotes and upholds the highest professional practices and ethical values in its work with Australian museums and their communities.
- Is a fair and equitable employer.

Audit

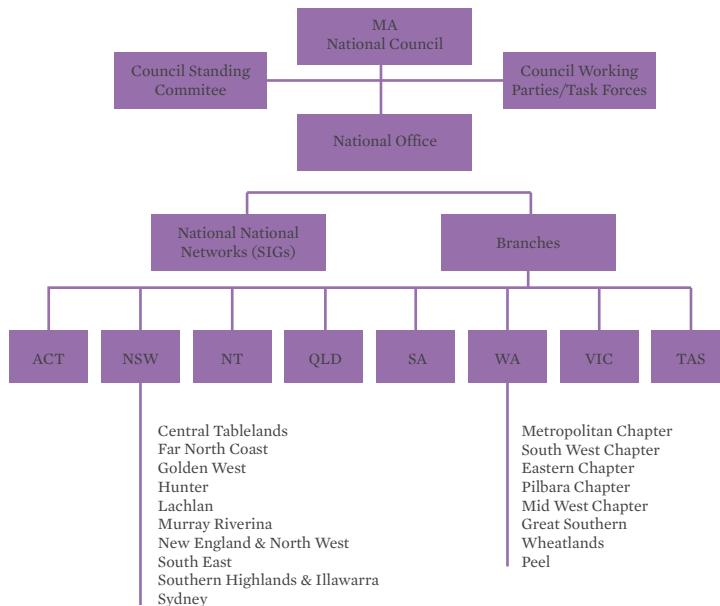
Museums Australia conducts an annual financial audit in line with the ACT Registrar-General's Office regulations. The annual audit is facilitated and consolidated by the National Office and the nominated Auditor (AccountAbility) - principal, Mr Anthony Wilson.

Ethical Standards

Staff and volunteers of the national association provide MA's most highly valued, collective repository of expertise, experience, collegial input and resources.

MA places a high priority on ensuring safe, healthy, supportive and productive workplaces. MA National Office is currently working on policies and procedures to advance workplace standards as part of an ongoing initiative to provide tools supporting development of all divisions of the association.

MA members are bound by Museums Australia's *Code of Ethics*, and Museums Australia - especially through its partnership with ICOM Australia - upholds the *ICOM Code of Ethics for Museums* (2004) as the international base-standards code promulgated by the International Council of Museums (Paris) (3rd, rev.edition), ICOM, Paris 2006. Museums Australia National Director, Bernice Murphy, has chaired the ICOM Ethics Committee (Paris) for seven years (2005-2011).



Human Resources Management

Museums Australia National Council performed a review of MA's national human resources management in late 2011, which will be continuing in 2012.

Staff

At 31 December 2011, Museums Australia employed 19 people across all divisions, including 3 contractors, 4 full-time employees and 12 part-time employees. Of these, 17 were female and 2 were male.

Museums Australia National Office (MANO)

The National Office (located at the National Museum of Australia) maintains two full-time employees: Manager of National Operations, Lee Scott; and Assistant Manager Communications, Stephanie Hamilton. The National Director meanwhile continued to provide externally contracted services in 2011 as a 0.8FTE position based in the National Office. In September/October 2011, the MA National Office relocated from the Museum of Australian Democracy at Old Parliament House to the National Museum of Australia, Canberra.

New South Wales

New South Wales branch Executive Officer, Paul Bentley, again guided State Branch activities in 2011 on a part-time basis under the MA-NSW Executive Committee and state President (Andrew Simpson). Paul Bentley was again been greatly involved in the maintenance and growth of the NSW Branch in 2011, including volunteering many hours in addition to the limited hours remunerated under contract.

Victoria

MA (Vic) State Branch (working out of generous office facilities in the Melbourne Museum) supports a dynamic team of full-time, part-time and contracted positions, headed by Executive Director, Laura Miles. MA (Vic) is responsible for providing various programs and services across Victoria, including the important Museum Accreditation Program and Victorian Collections.

Western Australia

At the end of 2011, MA-WA supported 3 part-time staff. MA-WA Executive Officer, Jane King, left MA in November to take up a new position with the State Library Foundation in WA - after helping to coordinate and present the successful 2011 Museums Australia

National Conference in Perth, and providing invaluable support for the WA museums sector through MA for many years. A new EO for MA-WA starts in March 2012.

South Australia

MA (South Australia) received targeted funding from the SA Government in 2011: specifically to employ a part-time contractor to provide administrative support for the MA National Conference to be held in Adelaide in September 2012. Anne Johnson was accordingly contracted for 1 year to support the Conference Organising Committee leading up to the 2012 Conference.

All other MA divisions and sub-divisions are fully operated by colleagues acting as *volunteers* - often serving on a wide array of committees - providing steerage for the association's services outreach, national and regional collaboration, and development of all parts of the sector according to varied specialisations, goals, programs and projects resourced and national basis.

Privacy and Records Management

MA members' personal and financial information is maintained in strictest confidentiality, in line with Museums Australia's Privacy Policy Statement. MA does not keep financial information about members on file.

Financial records, including membership transactions, are maintained (electronically and offsite) for at least five years, and human resources records for seven years. MA's membership database archives are maintained electronically, and date back to the incorporation of the association in January 1994 (in line with Section 67 of the Associations Incorporations Act 1991). The current membership database is stored online using the MA Content Management System designed and maintained by Link Digital, and updated by MA Australia National Office. The database is a dynamic online system, allowing the National Office, Branch and Network representatives and members to access and update relevant information.

Museums Australia National Office will be conducting branch-wide audits on records management in 2012-13, with the aim of streamlining filing, archives and library resources, and digitising records across all offices.

.....

Branches

Australian Capital Territory

President **Carol Cartwright**
 Vice-President **Roxanne Lamby**
 Secretary **Kassandra Hobbs**
 Treasurer **Glenda Smith**
 Committee members
Claire Baddeley **Gabrielle Hyslop**
Roger Garland **Alex Marsden**
Kate Morschel **Lyn Beasley**

The ACT Branch has spent considerable time and energy on planning for the 2013 National Conference which will be held in Canberra (17 - 20 May 2013). MA-ACT is working closely with the Professional Conference Organiser (Conference Logistics), which has been contracted to coordinate the next three National Conferences. We have consulted with the wider ACT membership about the 2013 theme and decided to conduct a tightly focussed conference that will highlight *nation*, *industry* and *workforce* sub-themes, as well as utilising the latest technologies in social media as communication tools for delegates. The 2013 Conference Organising Group has established five sub-committees, each with a clear governance structure for reporting and accountability.

MA-ACT again offered a comprehensive calendar of professional development and recreational events for members in 2011, concluding with a particularly well-attended Christmas party at the National Library of Australia.

ACT Branch offered two bursaries of \$1,000 each to assist with costs for registration and travel to Perth to attend the MA National Conference in November 2011. These bursaries were awarded to: Kate Gardener, from the Canberra Museum & Gallery; and Carlie Wilson, from the Australian War Memorial. Both made excellent post-conference presentations at an MA-ACT Branch meeting subsequently. ACT Branch acted again as a partner in the 2011 NSW IMAGinE awards, contributing \$2,000 and providing one of the judges for these awards. ACT Branch was also a partner in the National Symposium on *Museums, Memory and Ethics*, realised at the National Museum of Australia in May 2011 to celebrate International Museum Day.

The ACT Branch plan identifies four strategic priorities:

- Undertake advocacy and communication
- Develop business practices, infrastructure and resources
- Enhance members' programs; and
- Plan for the 2013 MA National Conference

ACT Branch looks forward to hosting the 2013 MA National Conference in Canberra's centenary year, and anticipates a pre-conference membership drive to enable all museum workers and volunteers to have the opportunity to attend a rich event at best-possible rates.

New South Wales

President **Andrew Simpson**
 Vice-President **Vicki Northey**
 Secretary **Geoff Barker**
 Treasurer **Rebecca Pinchin**
 Committee Members
Gay Hendriksen **Maree Clutterbuck**
Jenny Horder **Andrea Fernandes**
Gina Hammond **Bronwyn Coulston**
 Executive Officer **Paul Bentley**

MA-NSW's major event in 2011 was the state symposium, *Place, Space and Identity: New Directions for NSW Museums*. Organised primarily to stimulate ideas for the Arts NSW strategic review of the museum sector, the symposium also generated revenue for the NSW branch and helped to strengthen relationships with institutions, chapters, members and students. Support for the event by Arts NSW, the Powerhouse Museum, Macquarie University, the Museums Appreciation Society and other sponsors was a significant factor in the event's success.



Other NSW events and professional development activities in 2011 included a series of tours and talks in Sydney. The IMAGinE Awards, presented in partnership with Museums and Galleries NSW, Public and Regional Galleries NSW and Museums Australia ACT Branch, celebrated outstanding achievements by NSW and ACT museums and galleries. The branch also provided bursaries to the 2011 National Conference in Perth.

NSW Branch experienced a small operating surplus in 2011 (instead of a projected deficit budget of \$3000). A substantial drop in membership revenue was off-set by income from the state symposium, operational cost containment and increased voluntary effort.

On the advocacy front, MA-NSW prepared three submissions in 2011: one to Arts NSW on supporting regional and community museums and galleries in NSW; one to the NSW Office of Communities on a NSW volunteering strategy; and a third to the Federal Office for the Arts (OFTA) in relation to the National Cultural Policy. These submissions drew attention to the need for governments to clarify responsibilities, assist in transforming the use of technology, facilitate cross-sectoral mechanisms, provide appropriate levels of funding, and develop policies on other related issues.

MA-NSW gave advice to members and others on a diverse range of topics, including cleaning museum objects; local government planning and cultural heritage buildings; architectural design specifications; lists of Australian museums and public galleries; using computers to manage collections; museum acquisitions; tax incentives; cultural policy and social enterprise; finding voluntary work in museums; designing exhibition spaces; and displaying art and Aboriginal objects.

MA-NSW's branch newsletter, *Museum Matters*, carried features on NSW museum strategies, museums and the media, and the Powerhouse Museum Migrant Heritage Centre, as well as coverage of state news and international museum trends. To complement the NSW group on MA's national social media site, <maNexus>, our NSW Twitter account, now with 250 followers, offers another channel to promote branch activities and receive information. Further plans to enhance the branch website, online channels and publications are in train.

As the national association clocks up a long legacy of 75 years of working on behalf of the museum sector

nationally (since the oldest former body, the Museums Association of Australia (MAA) was established to bring together natural history and science museums as far back as the late 1930s), the MA-NSW branch has established an evolving history page on its website, and is planning to add supplementary pages to acknowledge the work of those who have contributed to the branch over many years, to provide insights on challenges faced by the sector over a long period.

Our chapters continued to provide valuable support to museums and historical societies in their regions, through professional development activities, networking opportunities and newsletters.

Northern Territory

President **Michelle Smith**
Vice-President **Michael Cawthorn**
Secretary/Treasurer **Janie Mason**
Committee members
Helen Joraslafsky Jenny Bloomfield
John Bloomfield Joanna Barrkman

As part of our advocacy work in the Territory, MA (NT) followed up with the NT government on the progress of the *Building our Museums and Galleries* (BOMAGS). So far the report has not been made public.

In support of the MA National Conference in Perth, MA (NT) offered bursaries for individual members of MA who had never attended an MA National Conference, however due to a range of circumstances, the bursaries were not taken up in 2011.

MA (NT) President, Michelle Smith, was unexpectedly tasked with a major museum development project in 2011, resulting in reduced capacity to carry out planned tasks associated with Northern Territory membership services.

In 2012, MANT will continue to follow up the results of the BOMAGS consultations and lobby for the release of the final report. Hopefully this will result in some good outcomes for the regional museum sector in the Northern Territory and MA (NT) will continue to work with the division of Arts and Culture to progress the cause of the sector.

MA (NT) has agreed to support the Fourth International Congress of Women's Museums, which will be held in Alice Springs in May 2012. This is a very exciting event

and MA (NT) hopes to welcome visitors from across Australia as well as internationally. Committee member, Helen Joraslafsky, at the National Pioneer Women's Hall of Fame, is coordinating the event after having attended the previous three events in different countries.

Queensland

President **Lisa Jones**
Secretary **Josh Tarrant**
Treasurer **Brian Tucker**

In 2011 MA (Qld) continued to offer a Professional Development Bursary Program, to address the training and professional development needs of museums, their staff and their volunteers. Eight individual bursaries of up to \$500 were awarded, five to attend the M&GSQ State Conference in Mackay (Susan Purnell, Gympie Regional Gallery; Karen Barrett, Transport & Main Roads Heritage Centre; Elizabeth Gondwe, Talisah Edwards & Petrina Walker, North Stradbroke Island Historical Museum); and three (Wendy Birrell, Discover Eumundi; Ross Bower and Peter Smith, Redland Museum) to attend the SEQ Small Museums Conference at the Gold Coast. MA (Qld) also awarded a bursary to one volunteer (Alice O'Brien, Queensland Police Museum) to attend the MA National Conference in Perth in November.

2011 saw the last issue of M&GSQ's grant program for Museum Standards participants. MA (Qld) made the donation of \$50,000 for this program in 2008. Grants of up to \$5,000 per standards organisation were made available over a three-year period from 2009 to 2011.

MA (Qld) also continued to sponsor a prize for M&GSQ's Gallery and Museum Achievement Awards (GAMAA), and provided \$1,000 to the winner of the category, Individual: Volunteer. This year this category was won by Elaine Madill from the Wondai Regional Art Gallery.

Throughout 2011 MA (Qld) continued to work closely with Museum and Gallery Services Queensland, to help deliver services such as the 2011 *Mentorship, Exchange and Fellowship Program* and the M&GSQ State Conference: *Making a Difference*, held in Mackay. As part of the conference, MA (Qld) also sponsored Murray Massey from Cardwell to attend as one of the speakers.

MA (Qld) member services are administered by Museum and Gallery Services Queensland. The M&GSQ report can be accessed through their website at <<http://www.magsq.com.au/01.cms/details.asp?ID=1>>



South Australia

President **Robert Morris**
Vice-President **Jill Mackenzie**
Secretary **Regan Forrest**
Treasurer **Alexis Tindall**
Committee Members
Tony Kanellos **Elsbeth Grant**
Mirna Heruc **Michael Mills**
Pauline Cockrill
Executive Officer **Anne Johnson**

MA (SA) held a number of events in 2011 but with the focus of the state committee currently on the 2012 National Conference in Adelaide, programs have been a lower priority.

MA (SA) hosted a bus tour to the Adelaide Hills in October, with a group of around 20 people visiting The Cedars (Hans Heysen's studio and residence); Louise Flierl Mission Museum (Hahndorf); Hahndorf Academy; National Motor Museum; Chain of Ponds winery; and Old Highercombe Hotel (Tea Tree Gully). Photos from the day have been posted on <maNexus>.

MA (SA) sponsored an Interpretation Australia training event with consultant Susan Cross, who was one of the MA/IA 2011 Conference keynote speakers. In exchange for the Branch's sponsorship, MA members were able to register at this full-day interpretive writing workshop at the IA member rate. The event proved so popular that a duplicate workshop was staged. Of the participants who returned an evaluation form of the event, 29% stated that they are MA members.

As in previous years the monthly breakfast meeting in December 2011 was organised as a Christmas event, with complimentary coffee and door prizes. This has proven attractive to members and was a great success. MA (SA) meanwhile continues to hold a monthly breakfast on the first Friday of every month, at a city centre café.

Planning for the 2012 National Conference in Adelaide (24-28 September) has been a priority among the SA Branch Committee. Notable progress has been made including confirming seven keynote speakers from America, New Zealand, Hong Kong and Australia. Feedback to date is that these speakers will be popular drawcards to the Conference. Other speakers have been approached and we are currently in negotiations for a variety of presentations.

Tasmania

President	Chris Tassell
Vice-President	Elsbeth Wishart
Secretary	Linda Clark
Treasurer	Sue Atkinson
Committee members	
Bill Seager	Kate Morris
Elizabeth Adkins	Kirsten Brett

Museums Australia (Tasmania) had a relatively inactive 2011. Treasurer Sue Atkinson contributed a great article to *Museums Australia Magazine* in November 2011 (Vol. 20(2)) and Samuel Dix from Narryna Heritage Museum wrote an article on how winning the 2010 ABC Radio National Regional Museums Award in Vol. 19(4) May 2011. Tasmanian members can keep up to date with what is happening in the state sector by subscribing to the blog <<http://tassiemuseums.edublogs.org/>>. There are many events planned in 2012.

Museums Australia (Tasmania) will be hosting the 2014 Museums Australia National Conference which will be

held in May in Launceston.

Victoria

President	Daniel Wilksch
Vice-President	Jan Croggon
Secretary	David Demant
Treasurer	Ian Scott
Committee Members	
Jo-Anne Cooper	Karlie Hawking
Jim McMann	Robyn Till
Executive Director	Laura Miles

In 2011 MA (Vic) faced a challenging year of campaigning to reinstate key project funding, with a lobbying campaign to reinstate the Community Collections Training and the Museum Assistance Grants programs, involving over 60 community museums and ABC media coverage.

At mid-year we undertook a restructure to refocus on core services and reposition the state Branch to respond to changes and opportunities. At the start of 2011, the MA (Vic) staff comprised 8.6 FTE, downsized to 7.0 at year's end. By year's end we had applied for over \$1m in project funding, with a 27% return rate.

This targeted fundraising effort enabled MA (Vic) to continue regional training in flood-affected areas of Victoria with philanthropic support, and develop Victorian Collections, which has over 4,000 items catalogued, while pursuing discussions with three other states to standardise collections-level data. MA (Vic) also loaned out 'digital packs' of laptops, scanners, digital cameras and 3G internet connections to 36 groups across Victoria requiring hardware support to catalogue and digitise significant items in local collections.

In 2011 MA (Vic) offered a total of 68 events including exclusive member events, lectures, workshops and masterclasses, cross-referenced with museum feedback to ensure a balanced needs-based program. We also supported the hosts of the 2011, 2012 and 2013 MA Conferences in Perth, Adelaide and Canberra, through production of a new Conference Handbook.

Attendance figures are on our projected 2011-2013 growth model, with a 50% improvement on 2008 despite no corresponding increase in staffing, with figures of 1,881 in 2011 (2010: 1,515; 2009: 1,446; 2008: 1,219). Our target participation ratio is 50:50 between metropolitan and regional attendees, and in 2011 our audience comprised



57% metro, 40% regional, 2% interstate and 1% international participation.

Victoria's revised Digital Strategy rolled out extensive branding, navigation and context changes to MA (Vic)'s website, which attracted over 300,000 visits in 2011. Over 100 publication and collateral items with a circulation of 51,000 were produced in-house by our expert team in 2011, in line with the *National Standards for Australian Museums and Galleries version 1.2*. This includes INSITE magazine, which switched to full colour digital printing in 2011.

The Victorian Museum Accreditation Program is in line with projections, with 13 site assessments conducted, five enrolments and five accreditations/reaccreditations achieved, bringing the total number of museums in the Program to 70. We congratulate both the National Sports Museum and the Dax Centre, who were newly accredited this year.

Seven Exhibition Grants were devolved in 2011, along with site visits to 26 museums, 100 venues surveyed for hosting capacity, and 27 local government arts officers interviewed to gauge their support for museums and galleries.

As the economic situation puts pressure on the arts and cultural heritage sector, MA (Vic) extends a special thank you to our major funders and supporters: Arts Victoria, the Department of Business and Innovation, Victorian Cultural Network, Sidney Myer Foundation, Lord Mayor's Charitable Foundation, PROV Local History Grants, City of Melbourne, Dell, Telstra, and our 23 strategic and 33 collaborative partners.



Special thanks is reserved for Museum Victoria for its enduring support of the Victorian Branch of MA in providing in-kind office space, access to utilities and IT support, meeting rooms, exclusive member events and the expertise of staff and volunteers across their four venues.

Finally the Branch is grateful for the ongoing support from Branch Committee President, Daniel Wilksch, together with the members of our Branch and Advisory Committees, panellists, mentors and volunteers who collectively support our diverse services to the community.

Western Australia

President	Soula Veyradier
Vice-President	Lorraine Fitzpatrick
Secretary	Christen Bell
Treasurer	Robert Mitchell
Committee members	
Catherine Czerw	Cathy Day
Barbara Matters	Philippa Rodgers
Kate Gregory	Jude Eastwood Savage
Executive Officer	Jane King (to Nov 2011)

Museums Australia (WA) had an extremely successful and busy year in 2011.

Hosting the inaugural Museums Australia/Interpretation Australia National Conference was a very exciting and challenging task, given our limited staff resources. However, the conference was a great success, attracting over 500 delegates from this state, interstate and internationally. There was a diverse and talented line-up of keynote and plenary speakers, many of whom sparked

discussion and debate not only throughout the conference but on an on-going basis.

In an innovative step, Museums Australia introduced a 'public program' component to the conference through a public 'Community Conversations' event which saw WA Museum chief executive officer, Alec Coles OBE, and Thinker in Residence Paul Collard, discussing the important role that the arts, culture and creativity play in the development and wellbeing of children and young people. This event was held in the Perth Cultural Centre and was open and free to the public. It was inspiring to see and hear so many members of the public joining in the debates and offering their views on the subject.

This was coupled with a special showing of compiled footage from cultural institutions and events throughout the state on the large LED screen recently erected in the Perth Cultural Centre

Our professional development program also saw some very well patronised workshops in our Masterclass series. Developed in partnership with the Office of Heritage in Western Australia, these workshops explored the many different and fascinating implications of interpretation. This was coupled with an education symposium that examined through our speakers the opportunities that are being opened to museums through the adoption of the new national curriculum.

The all-important regions in Western Australia were not forgotten and a special effort was made to provide timely and useful workshops for this component of our database as well as ensuring that we secured bursaries for our regional members to take advantage of the National Conference being held in Western Australia, an event that only happens once every eight to ten years.

Whilst there was a lot of hard work and a plethora of meetings throughout 2011 to bring all of the elements together, the satisfaction of receiving the many positive comments about the conference, in particular, made it all worthwhile. Museums Australia (WA) is justly proud of its achievements. in 2011



.....

National Networks

Review of National Networks

Museums Australia's National Networks encompass the specialist areas of the sector nationally. Their activities provide important membership benefits, both within the association as a social body and in stimulating development of the sector as a whole. It is vital that the National Networks remain relevant and engaged for members.

In 2010 Museums Australia began the task of reviewing the list of currently available National Networks, to determine their status as 'active' or 'inactive', and to establish what benefits each offers to members. This review has been undertaken in consultation with the Network administrators and members. The review continued in 2011 and has resultant recommendations that will be implemented in 2012.

The major evaluation recommendation to National Council is that several of the National Networks, including one paid Network, will - at the Annual General Meeting 2012 - be disbanded as constitutional divisions of the association, in favour of becoming more informal discussion groups on <maNexus>, MA's social media site.

Museums Australia meanwhile acknowledges the dedication and expertise of so many of the Network administrators and contributors, who volunteer their time and services to members.



National Network Activities

Most paid National Networks engaged with their members throughout 2011 through regular newsletters, surveys, social events, bursaries, sponsorships and dedicated conference streams. Several Networks held their own programs and events in 2011.

Council of Australian University Museums and Collections (CAUMAC)

CAUMAC continued to fund research into museums and collections in the tertiary education sector as a way of updating the 1990s Cinderella Collections Report data (see MA Annual Report 2010 for more information on this project). A total of 400 university museums and collections in Australia were identified.

This sector-wide data gathering exercise will enable CAUMAC to connect with key stakeholders and inform future advocacy efforts.

International Museum Theatre Alliance – Asia Pacific (IMTALAP)

The 2011 IMTAL conference, for people focused on museum theatre, was held over four and a half days in Melbourne and Ballarat in October. The event attracted more than 80 delegates, drawn from all over Australia, the UK, New Zealand, USA and China, and proved to be a great success.



Read about the conference in *Museums Australia Magazine*, Vol. 20(2) November 2011, and on the IMTALAP website <<http://www.imtalap.org/>>

Museums Australia Education National Network (MAENN)

The Museums Australia Education National Network and its branches hosted several events in 2011.

In March a major education event was held at the University of Canberra, which brought together museums educators and university education method lecturers to discuss common practice and how to further this important connection. A variety of education-focused sessions were presented at the Perth MA National Conference, and MAENN also continued its advocacy role in relation to the new Australian Curriculum.

The ACT Branch (IMAGE) again presented their annual program, Keys to Canberra, which connects educators with museum education programs.

Maritime Museums

The Australian Maritime Museums Council presented their 2011 annual conference in Mannum, South Australia, at the Mannum Dock Museum (23-26 March). The conference had a very successful attendance and focused on building support in Maritime Museums, especially in regional communities. The AMMC conference offers members and associates a forum to debate issues that are specific to maritime collections, to share information in practical workshops, and to provide avenues for members to build their networks. The conferences also provide opportunities for members and sectoral colleagues to visit new ports and new coastlines, with introductions provided by local experts.

The AMMC 2011 conference papers have been published on the AMMC's website <<http://ammcouncil.ning.com>>

Museum Historians

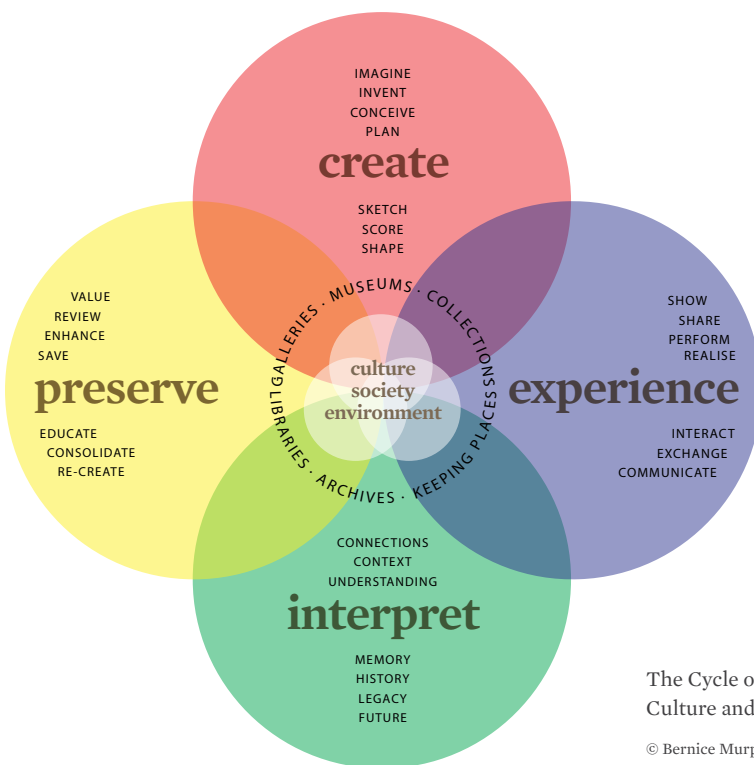
The Museum Historians National Network held their Global Curator exchange program for the third consecutive year, in association with the Curator's Committee of the American Association of Museums, and

with the support of ICOM Australia. More information on the 2011 Global Curator program is available on the MA website <<http://www.museumsaustralia.org.au/site/museumhistorians.php>>

Performing Arts Heritage (PASIG)

The 2011 PASIG annual conference was held in conjunction with Australasian Sound Recordings Association (ASRA) and the Australian branch of the International Association of Music Librarians (IAML). Titled 'Raising the Standards', this event took place in Canberra, 23 - 25 November 2011. PASIG members attended a joint day on 24 November 2011 at the National Library of Australia, with papers presented by representatives from across each group. A PASIG-specific day was held on 25 November 2011 at Gorman House Arts Centre, and included presentations from members and Canberra guests, as well as an Annual General Meeting.





The Cycle of Culture and Heritage

© Bernice Murphy & Museums Australia, 2009

.....
Advocacy

Museums Australia made strong and often detailed submissions to a number of federal government inquiries or policy consultations on key issues as follows:

- *Submission to NBN Inquiry* (re. National Broadband Network); House of Representatives Inquiry (Museums Australia, Canberra, 25 February 2011).
- *Submission to Review of Private Sector Support for the Arts* (Mr Harold Mitchell AC, Review Chair, & Review Team, Office for the Arts), for The Hon Simon Crean MP, Minister for the Arts, Department of the Prime Minister and Cabinet (Museums Australia, Canberra, 8 July 2011).
- *Submission on the Exposure Draft of the 2011 Strategic Roadmap for Australian Research Infrastructure*, National Research Infrastructure Council (NRIC) and Department of Innovation,

Industry, Science and Research (Museums Australia, 22 July 2011).

- *Museums Australia Submission on Immunity from Seizure for Cultural Objects on Loan*, to Office for the Arts (The Hon Simon Crean MP, Minister for the Arts); (Museums Australia, Canberra, 21 September 2011).
- *Repositioning the Culture and Creativity of all Australians: Museums Australia submission to National Cultural Policy Taskforce, 2011* (Museums Australia, Canberra, 21 October 2011).

These submissions, along with those made in past years, can be found on the MA website:

<http://museumsaustralia.org.au/site/whatwedo_advocacy_submissions.php >

Membership

Museums Australia membership finished 2011 with a modest, but positive growth in member numbers overall, having achieved a total of 1483 members.

Snapshot of Membership

MA's Individual members range from professional and executive members across the sector to students and volunteers - from both large metropolitan museums and galleries to small regional historical societies. MA's Individual membership is drawn from a wide variety of employment backgrounds and interests, including conservation, curating, education, art and design, visitor research, marketing, museum theatre, natural history and science, local and family history, historic sites and collections of general interest. This diversity serves to enrich both MA membership and member services in a shared dedication to enhancing Australia's heritage and its conservation, as well as increasing networked access of information and resources to diverse publics.

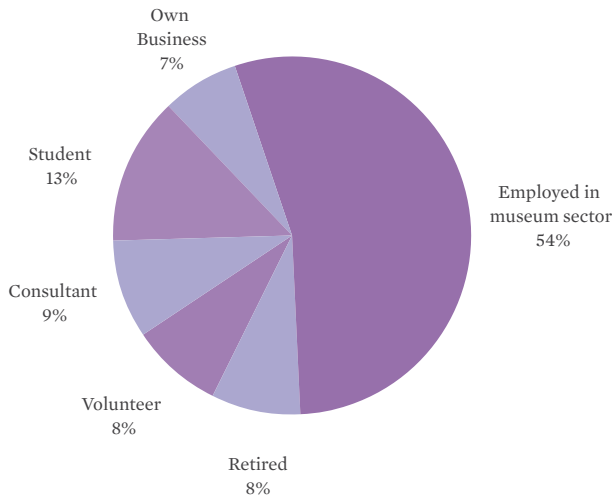
MA's Institutional membership numbers 699 Australian institutions (both large and small). However, in reality, this number represents many thousands of staff, volunteers and friends nationally.

Total Membership

Total members	1483
Institutional	699
Individual	784
New members	260
Lapsed members	274
Total renewed	1199 (81%)

New Members

Museums Australia has warmly welcomed all of our new members who joined in 2011. New memberships were spread relatively evenly throughout the year, with a small spike leading up to the National Conference (held in Perth). Branches actively promoted Museums Australia, leading to a positive growth in member numbers and responsiveness. Museums Australia also welcomes two new major state Institutional members: the South Australian Museum (Adelaide) and the Tasmanian Museum and Art Gallery (Hobart).



Individual membership by employment

Membership Strategy and Development

In 2011 Museums Australia National Office (MANO), in conjunction with the new National Council Standing Committee for Membership, has been developing strategies for enhancing MA member services and benefits. One important benefit targeted in this work is 'membership card recognition' at Australian institutions.

MANO has received some positive responses from our largest institutional members regarding discounts offered to Museums Australia members on presentation of their member card. A list will be available on the MA website in early 2012. MANO will continue to liaise with institutions in Australia, and hopefully also New Zealand, and both increase and enrich this array of member benefits in 2012.

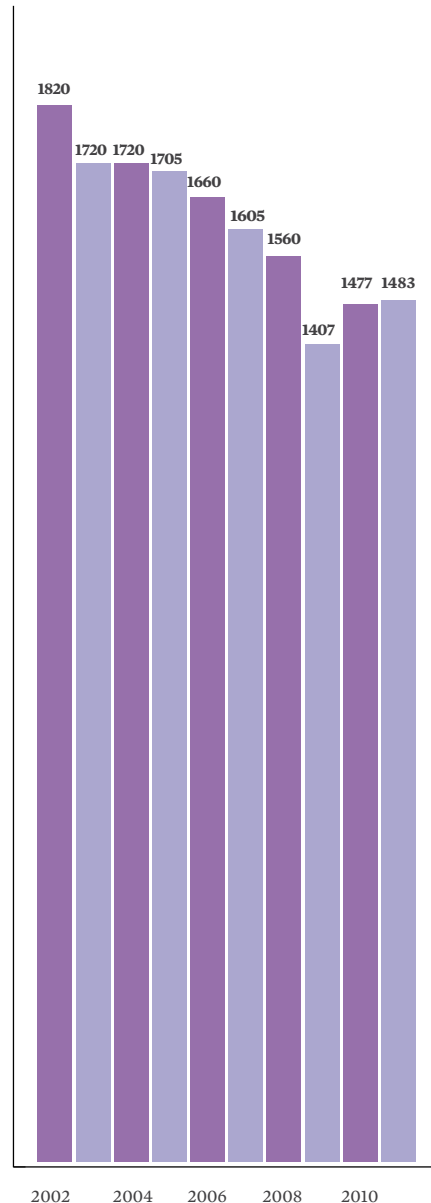
Lapsed Member Surveys continue to be sent to those who have not renewed their MA membership. As in 2011, the number of members who renew after such individual approaches is approximately 15%.

From Lapsed Member Surveys in recent years MA has determined that one of the main weaknesses of the association is a lack of sufficient diversified communication with members and the organisation of relevant events by some branches and National Networks throughout the year.

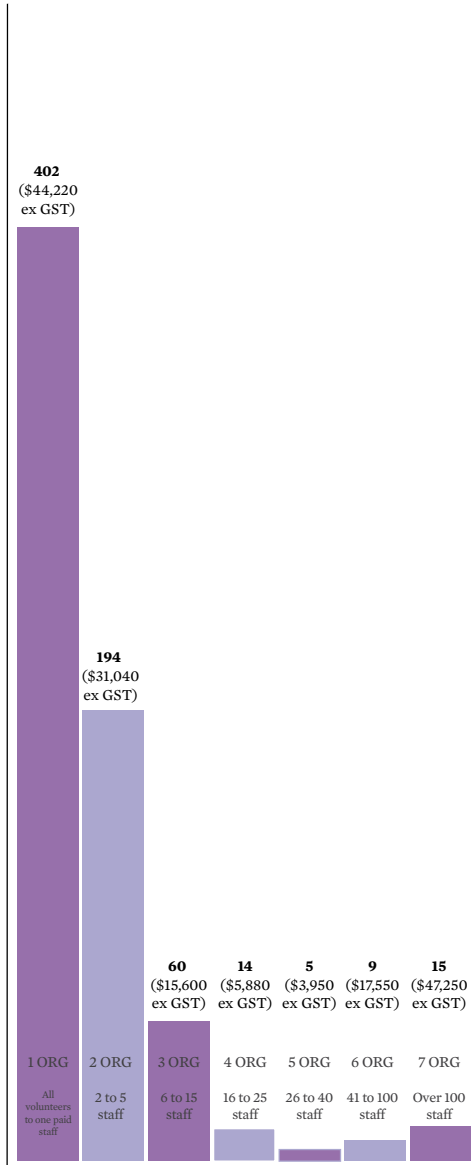
MA branches and National Networks have accordingly been encouraged by National Council to review their activities and communication policies, and there has been a positive response from members in 2011 based on this direct approach.

MA divisions will be offering members a wider range of activities in 2012 – and members are urged to make sure their email addresses are up-to-date on the national database.

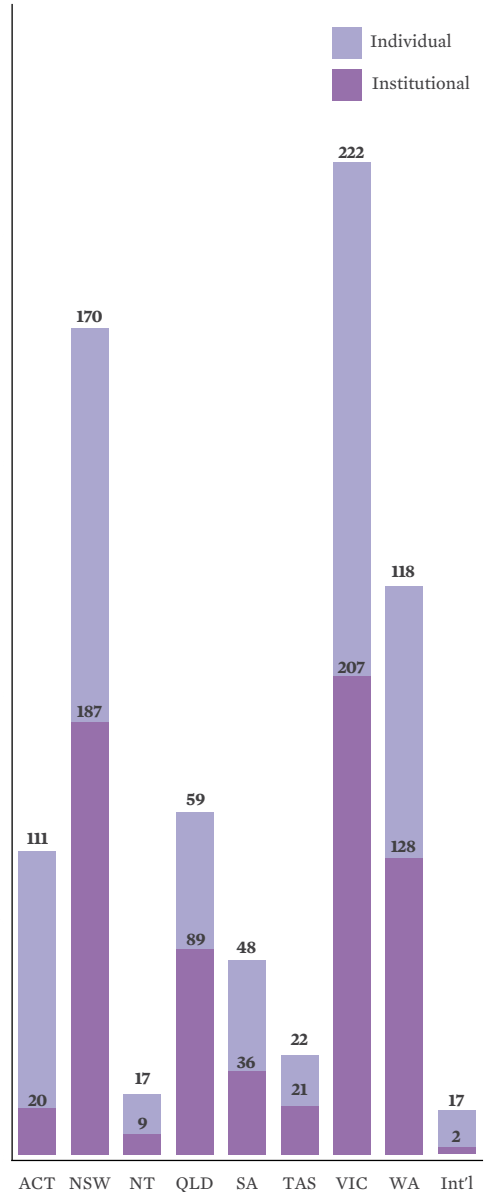
Trends in total membership by year 2002-2011



Institutional membership by category



Total end of year membership by State/Territory



.....

Events

The following national events were held in 2011. A wide range of state- and chapter-run events were held throughout the year, details of which can be found in the State Branches section of this Annual Report.

National Conference 2011 (Perth, WA)

The 2011 Museums Australia National Conference was held in partnership with Interpretation Australia at the State Theatre Centre in Perth, Western Australia (14 - 18 November 2011). The theme for 2011 was 'At the Frontier: Exploring the Possibilities'.

The traditional 'R and R' day (presenting the Regional + Remote program prior to the Conference opening) was this year replaced by the CRS (Community, Regional and Specialist) Day, conducted on the Wednesday of the conference week. This regional program (as well as the Indigenous stream throughout the main conference program) was generously supported through bursaries sponsored by the Australian Government's Department of Prime Minister and Cabinet (Office for the Arts), and Western Australia's LotteryWest.

A wonderful regionally-centred program, imaginatively prepared by the Organising Committee, was well attended and much appreciated by far-travelled delegates who were treated to a range of interesting presentations, complemented by practical workshops in various aspects of museology, also highlighting some case studies of innovative projects being undertaken in the regions

across the nation.

Completing the 2011 National Conference package in Perth, a number of specially tailored 'Conference public programs' were presented. These included the 'Community Conversations' initiative, which involved Paul Collard, the Thinker in Residence for the Commissioner of Children and Young People; and Alec Coles OBE, Chief Executive Officer of the WA Museum. Both events explored the important roles that the arts, culture and creativity play in the development and wellbeing of children and young people, laying down tracks for life-long learning. An appreciative and interactive audience lined the Wetlands Stage in the Perth Cultural Centre Precinct to discuss this topic – with some high-value insights offered by both audience members and the speakers.

Museums Australia would especially like to thank its sponsors and supporters for their generous contributions to the success of the 2011 National Conference – in particular the conference's Principal Sponsor, the Government of Western Australia (Department of Culture and the Arts).

A selection of conference papers is available on the Museums Australia website: <www.museumsaustralia.org.au>.

The 2012 Museums Australia National Conference will be held from 24-28 September 2012, at the University of Adelaide, South Australia. The theme is *Research and collections in a connected world*.



Museums, Memory & Ethics

Museums Australia National Symposium, 19-20 May 2011, National Museum of Australia, Canberra

International Museum Day (IMD), set by the International Council of Museums (ICOM), was themed in 2011 around 'Memory and Museum'. To coincide with this event on 18 May, and Museums Australia's own Annual General Meeting, Museums Australia held a two-day national symposium, with workshops, entitled 'Museums, Memory and Ethics'. Museums Australia decided to link this important memory theme for museums worldwide in 2011 with an equally compelling and topical theme for museums: a broadening ethics of practice affecting all areas of museums' work – from their collections and exhibitions to a more vibrant public interface and engagement with diverse audiences.

The MA symposium, held on 18-19 May 2011 at the National Museum of Australia in Canberra, brought together nationally and internationally renowned experts and colleagues to speak on current projects and innovations in the areas of history, exhibiting 'memory' in museums, and the important issues surrounding ethics and museum practice. On the second day, delegates participated in workshops, facilitated by Dr Jennifer Barrett (University of Sydney), Dr Andrew Simpson (Macquarie University), and Dr Jonathan Sweet (Deakin

University). These workshops were designed to lay the groundwork for a review and revision of the Museums Australia Code of Ethics (1999).

Acknowledgements

Museums Australia greatly appreciates the generous sponsorship for this national symposium by Museum of Australian Democracy at Old Parliament House, MA (ACT), and ICOM Australia, and for the support of National Museum of Australia.



.....

Awards

Museums Australia offers congratulations to all winners of the 2011 Awards programs, and salutes the sector for its continued repositioning of museums, galleries and cultural creativity through the strong impact of such successful awards programs.

MAGNA 2011

The **Museums and Galleries National Awards** (MAGNA) were established in 2011 by Museums Australia to celebrate and reward excellence in museum practice across the cultural heritage sector, highlighting the success of Australia's museums, galleries and cultural organisations, from small volunteer-run associations to the largest state and national institutions.

The Awards program encourages excellence and recognises the significant positive impact of our highest achievers in contributing to the sector, by establishing benchmark excellence in Exhibitions, Public Programs, and projects and developments that promote ethical and sustainable practices.

The 2011 MAGNAs were presented at the Museums Australia's National Conference dinner held in the historic Hackett Hall Gallery, Western Australian Museum in Perth on Thursday 17 November 2011.

The NATIONAL WINNER of the 2011 MAGNAs was the Australian Institute for the Conservation of Cultural Material for this body's *Development of Guidelines for Environmental Conditions for Museum and Galleries*. The Judges commented that 'This project holds great significance for the cultural and heritage sector throughout Australia as it builds knowledge, skills, understanding and standards for keeping collections safely into the future, both in storage and whilst on display. These guidelines will become the well-thumbed or bookmarked resource that remains on every gallery, library, archive and museum professional's desk.'

Information on all the winning MAGNA entries can be found on the Museums Australia website <http://www.museumsaustralia.org.au/site/magna2011_winners.php>

Acknowledgements

Museums Australia thanks our Major Sponsor, Link Digital; our Sponsor, Designcraft; and our institutional Supporter, National Museum of Australia.



MA (VIC) Victorian Museum Awards

Proudly presented by Museums Australia (Victoria), the 17th annual **Victorian Museum Awards** were announced on Thursday, 4 August 2011, at the National Gallery of Victoria, Melbourne, with special guest host, Rod Quantock, presiding over the buoyant event.

The Victorian Museum Awards celebrate the value and strong diversity of the museums sector in Victoria and they aim to promote best practice in all elements of museum operations. Awards are offered in a range of categories, including individuals (volunteer and paid) and institutions (volunteer-run, small, medium and large).

Further information on the 2011 Victorian state winners and highly commended awardees can be found at the MA (Vic) website <<http://www.mavic.asn.au/awards>>

MAPDA 2011

The **Museums Australia Multimedia and Publication Design Awards** (MAPDA) for 2011 once again celebrated excellence in design in the museums and galleries sector across Australia and New Zealand. 2011 was a 'bumper year' for entries, and the overall standard was outstanding.

The 2011 Awards were presented as part of the Museums Australia National Conference, at a ceremony held at the State Library of Western Australia. This was the third time the MAPDA awards have been presented in Western Australia.

All the Highly Commended, Website and Multimedia Winners can be viewed on the MA website <http://www.museumsaustralia.org.au/site/whatwedo_awards_mapda.php>

- The 2011 'Best in Show' for print publications was awarded to Lake Macquarie City Art Gallery (NSW) for their poster *Carnival* (Designer: Stephen Goddard (Stephen Goddard Design)).
- The 2011 'Best in Show' for multimedia publications was awarded to Sydney's Object: Australian Centre for Craft and Design's website, *Spring Series* <http://www.object.com.au/springseries> (Designer: Canvas Group).
- The 2011 Judges Special Award Winner was Gertrude Contemporary (Melbourne) for their *Corporate Branding Suite* (Designer: Fabio Ongarato Design).

Acknowledgements

The MAPDA Committee would like to thank our supporting partners: National Portrait Gallery, National Gallery of Australia, National Library of Australia, National Gallery of Victoria, Art Gallery of Western Australia, Art Gallery of New South Wales, and State Library of Western Australia. And special appreciation is due to MAPDA sponsors: BlueStar Print, Interactive Controls, and Australian Book Connection.



.....

Communications

Museums Australia Magazine

Museums Australia Magazine (MAM) is released quarterly, and contains relevant and informative content for the sector. MAM is beautifully designed and thoughtfully edited (and published using sustainable, recycled stock) to provide members and subscribers with a truly enjoyable and enriching experience.

MAM is now available and viewable online, free for all readers for the current issue, and then archived for members only.

Museums Australia Website

Museums Australia's national website continues to grow as a national tool for members. The online renewal functions incorporated in 2010 have proven highly successful.

A feature launched in 2011 is the Magazine Rack, where members can access an index of all past issues of *Museums Australia Magazine* on an article level, and download individual issues.

Museums Australia e-Bulletins

MA's e-Bulletins are distributed electronically by the National Office on a weekly basis to all members. The e-Bulletins detail national and international news, events and opportunities.

State branches and National Networks also distribute regular newsletters by email and/or post to their members.

Jobs Bulletin

Museums Australia's online Jobs Listing and emailed Jobs Bulletin are highly popular for jobseekers and advertisers.

maNexus

<maNexus> is MA's online social media and networking hub, available to members and non-members with an interest in the collecting areas. <maNexus> continued to grow and evolve in 2011 as a forum through which to discuss a variety of interests and concerns, a blog, event notices and photo sharing.

New features have been added that allow quick status

updates, users to link from <maNexus> to their own Facebook and Twitter accounts, as well as chat facilities which will be explored further as a tool for online 'virtual' events in 2012.

<maNexus> is an ad-free environment, with only one featured advertisement from a Museums Australia Magazine advertiser ever on display at a time.

State Publications

Several of MA's state branches publish comprehensive periodicals for their members. In 2011, MA (Vic) continued to produce its excellent *Insite* publications; meanwhile MA-WA similarly produced its fine *Musings*, and MA(NSW) its *Museum Matters*.

.....

Partnerships

Museums Australia has developed many strong partnerships with other national and international organisations. MA's key ongoing partner is ICOM Australia (the National Committee of the International Council of Museum, Paris). Museums Australia National Office provides secretariat services for ICOM Australia.

One MA partnership that has significantly strengthened in 2011 has been with the Council of Australasian Museums Directors (CAMD) through the Museums Metadata Exchange projects (funded in 2010 by the Australian National Data Service).

Museums Australia National Conference, held in Perth in November, was successfully hosted in partnership with Interpretation Australia.

MA is also an affiliate (and financially supporting member) of BlueShield Australia (BSA).

MA has sought to increase strategic partnerships in 2012 and into the future, including again working closely with the Gordon Darling Foundation on promotion and administration of the 2012 Museum Leadership Program.

MA would also like to thank our generous supporters and sponsors who have in 2011 contributed financial and in-kind resources that help MA continue to provide quality services and developmental opportunities for the Australia museums and galleries sector.

..... **Institutional Members**

Australian Capital Territory

ACT Historic Places
Australian Council of National Trusts
Australian Customs & Border Protection Service
Australian Federal Police Museum
Australian National Museum of Education
Australian National Wildlife Collection
Australian War Memorial
Canberra Institute of Technology
Canberra Museum & Gallery
Craft Australia
Designcraft
Discovery - CSIRO
Exhibitions Branch
Friends of the National Museum
Museum of Australian Democracy Old Parliament House
National Capital Educational Tourism Project
National Film & Sound Archive - Collection Development & Outreach Division
National Gallery of Australia
National Museum of Australia
National Portrait Gallery
Royal Australian Mint - Gallery & Education Section

New South Wales

A M Rosenblum Jewish Museum
Abbotsleigh Archives
Age of Fishes Museum
Albert Kersten Mining & Minerals Museum
Albury City Cultural Services
Armidale Folk Museum
Art Exhibitions Australia Ltd
Art Gallery of NSW
Art Gallery of NSW Library
Artbank
Arts Access Australia
Australian Army Military Police Museum
Australian Army Museum of Military Engineering
Australian Aviation Museum Bankstown
Australian Centre for Photography
Australian Country Music Foundation
Australian Credit Union Archives

Australian History Museum
Australian Museum
Australian Museum of Clothing and Textiles
Australian National Maritime Museum
Australian Society of Marine Artists
Australian Tennis Museum
Barker College
Bathurst & District Historical Society
Bathurst Regional Art Gallery
Berrima District Historical & Family History Society
Berry Museum
Bingara District Historical Society
Bishops Lodge Historic House - Management Committee
Bland District Historical Society
Brisbane Water Historical Society
Brunswick Valley Historical Society
Bundanon Trust
C. B. Alexander Foundation
Camden Historical Society Museum
Canowindra Historical Society & Museum
Casino and District Historical Society
Casino Folk Museum
Casula Powerhouse Arts Centre
Central West Libraries
Cessnock District Historical & Family History Society - Endeavor Museum
Charles Sturt University Art Collection
Coffs Harbour Regional Museum
Collection of Red Rock History
Conjoint Museum of RANZCO
Cootamundra Heritage Centre
Coppice Communication
Corowa District Historical Society
Cowra and District Historical Society & Museum
Cranbrook School Archives
Cultural Collections - University of Newcastle
Cundletown & Lower Manning Historical Society
Diocese of Maitland - Newcastle
Dungog Historical Society
Eden Killer Whale Museum
Evans Head Living Museum & Community Technology Centre
Fairfield City Museum and Gallery
Fighter World Incorporated - RAAF Base
Forbes & District Historical Association
Fort Scratchley Historical Society

Gallipoli Memorial Club Museum
 George Hanna Memorial Museum
 Gilgandra Museum & Historical Society
 Glen Innes & District Historical Society
 Glenalvon Museum
 Goulburn Regional Art Gallery
 Grafton Regional Gallery
 Great Lakes Historical Co-operative Society Ltd Heritage Centre
 Greek Orthodox Community of NSW
 Grenfell Historical Society
 Griffith Pioneer Park Museum
 Gulgong Historical Society
 Gundagai Historical Museum
 Gunnedah Rural Museum
 Harden-Murrumburrah Historical Society Museum
 Harry Daly Museum
 Hawkesbury Regional Gallery & Hawkesbury Regional Museum
 Hay War Memorial High School
 Hazelhurst Regional Gallery & Arts Centre
 Henry Lawson Society NSW
 Historic Houses Trust NSW
 Hurstville City Museum & Gallery
 Illawarra Historical Society
 Iluka History Group
 Jerilderie & District Historical Society
 Junee & District Historical Society
 Kandos Bicentennial Industrial Museum
 Kangaroo Valley Historical Society
 Kiama & District Historical Society
 Knox Grammar School Archives
 Lady Denman Heritage Complex
 Lake Macquarie & District Historical Society
 Lake Macquarie City Art Gallery
 Lambing Flat Folk Museum
 Lightning Ridge Historical Society
 Lightwell
 Lithgow Small Arms Factory Museum
 Liverpool City Library and Museum Services
 Maclean District Historical Society
 Macleay River Historical Society
 Maitland City Council - Maitland Gaol
 Maitland Regional Art Gallery
 Manning Valley Historical Society
 Mary MacKillop Place Museum
 May Gibbs Nutcote
 Merimbula-Imlay Historical Society
 Millthorpe & District Historical Society
 Monarch Historical Museum
 Morpeth Museum
 Mosman Art Gallery & Community Centre
 Mosman Library
 Mt Wilson & Mt Irvine Historical Society
 Mt. Victoria & District Historical Society
 Museum of Australian Currency Notes
 Museum of Fire
 Museum of Freemasonry
 Museum of Human Disease
 Museum of the Riverina
 Museum Studies - University of Sydney
 Narrabri & District Historical Society
 Narrandera Parkside Cottage Museum
 Naval Heritage Collection
 Nepean District Historical Society
 Newcastle Maritime Museum Society
 Newcastle Museum
 Newcastle Region Art Gallery
 Norfolk Island Museum
 North Coast Institute of TAFE - Creative Industries
 NSW Hall of Champions
 NSW Lancers Memorial Museum
 NSW Schoolhouse Museum of Public Education
 Object Australian Centre for Craft & Design
 Old Dubbo Gaol - Dubbo City Council
 Orange & District Historical Society
 Our Lady's Nurses for the Poor
 Parkes & District Historical Society
 Parks and Recreation Services - Goulburn Mulwaree Council
 Parramatta Visitor Information and Heritage Centre
 Port Kembla Heritage Park
 Port Macquarie Historical Society Inc
 Port of Yamba Historical Society
 Port Stephens Historical Society
 Powerhouse Museum
 Preservation Australia
 Prince Henry Hospital Nursing & Medical Museum
 Queanbeyan Library
 Rail Journey Museum
 Raymond Terrace & District Historical Society
 Richmond Main Mining Museum
 Richmond River Historical Society

Richmond Vale Railway Museum
Royal Australian Infantry Corps Museum
Royal North Shore Hospital Centenary Museum
S H Ervin Gallery
Salvation Army Heritage Preservation Centre
SCEGGS Darlinghurst
Scone & Upper Hunter Historical Society
Singleton Historical Society & Museum
Sir Edgeworth David Memorial Museum
Sir William Dobell Memorial
St. Catherine's School Museum
Stanton Library
State Library of NSW
Sydney Cricket Ground Museum
Sydney Harbour YHA and Big Dig Archaeology Education Centre
Sydney Heritage Fleet
Sydney Jewish Museum
Sydney Tramway Museum
Sydney University Museums
Tamworth Base Hospital & Health Service
Tamworth Historical Society
Tamworth Regional Gallery & Tamworth Power Station Museum
Temora Rural Museum
Tenterfield & District Historical Society
The Army Museum of NSW
The Australian Golf Heritage Society
The Australian Motorlife Museum
The Glasshouse - Port Macquarie-Hastings Council
The Hills Grammar School
The Prospect Heritage Trust Inc
The Rocks Discovery Museum
Thredbo Historical Society
Tongarra Museum
Trustees of ANZAC Memorial Building
Tweed River Art Gallery
Tweed River Regional Museum
UNE Heritage Centre
Uniting Care Burnside
University of Technology - Sydney
Uralla Historical Society - McCrossin's Mill Museum
Wagga Wagga Art Gallery
Walgett & District Historical Society Association
Western Plains Cultural Centre
William Clarke College
Willoughby City Council

Willoughby District Historical Society Museum
Wing Hing Long Museum
Wollondilly Heritage Centre
Wollongong City Gallery
Yanco Powerhouse Museum
Yass and District Historical Society
Zoology Museum - UNE

Northern Territory

Charles Darwin University Art Collection and Art Gallery
Katherine Museum
Museum & Art Gallery of the Northern Territory
National Pioneer Women's Hall of Fame
Northern Territory Library
NRETAS Parks & Wildlife
Nursing Museum - Charles Darwin University
Patakijiyali Museum
Strehlow Research Centre

Queensland

Abbey Museum of Art and Archaeology
Artspace Mackay
Australian Society of Archivists
Beenleigh Historical Village
Brisbane Girls Grammar School Archives
Cairns & District Chinese Association
Cairns Museum
Cairns Regional Gallery
Central Queensland Military & Artefacts Museum Association
Cobb & Co Store Museum
Cooktown Historical Society
Crows Nest Historical Society
Cultural Heritage & Collections Unit
Cultural Services Unit - Redland City Council
Diamantina Health Care Museum
Discover Eumundi: Heritage & Visitor Centre
Discovery Coast Historical Society
Dogwood Crossing @ Miles
Emerald Pioneer Cottage & Museum
Feather Clubs Association of Queensland
Fryer Library - University of Queensland
Gin Gin & District Historical Society
Girringun Aboriginal Corporation

Gladstone Regional Art Gallery and Museum
Gold Coast City Council
Gold Coast City Gallery
Gold Coast Hinterland Heritage Museum
Gordon White Library - Mackay Libraries
Griffith Artworks, Qld College of Art
Gympie Regional Gallery
Hinkler House Memorial Museum and Research Association Inc
Historical Woolscour Association
Inglewood & District Historical Society
Innisfail & District Historical Society
Ipswich Art Gallery
John Flynn Place Museum
Landsborough & District Historical Society - Landsborough Museum
Logan City Council
Logan City Historical Museum Society
Longreach Powerhouse Museum
Mater Archives and Heritage Centre
Miles Historical Village
Mount Bauple & District Historical Society
Museum of Australian Army Flying
Museum of Australian Military Intelligence
Museum of Brisbane
Museum Resource Centre of Southern Inland Queensland
Nambour & District Historical Museum Assoc
National Trust of Queensland
Nebo Museum
Noosa Museum
North Burnett Regional Council - Mundubbera Art Gallery
North Stradbroke Island Historical Museum Association
Nursing Museum Royal Brisbane Hospital
Perc Tucker Regional Gallery
Pine Rivers Heritage Museum
Pittsworth Shire Pioneer Village Museum
Qantas Founders Museum
QLD Performing Arts Centre Museum
Queensland Air Museum
Queensland Ambulance Museums
Queensland Art Gallery
Queensland Energy Museum
Queensland Maritime Museum
Queensland Museum
Queensland Police Museum
Queensland University of Technology Art Museum

R.D. Milns Antiquities Museum
Redcliffe Museum
Redland Museum
Rockhampton & District Historical Society
Rockhampton Art Gallery
Rockhampton Heritage Village
Royal Flying Doctor Service of Australia - QLD
Royal Historical Society of Queensland - Commissariat Store Museum
Samford District Historical Museum Society
Sarina District Historical Centre
Save the Mary Museum and River Education Centre
South Burnett Regional Council
Tableland Regional Gallery
The Australian Country Hospital Heritage Association
The Beck Museum Aviation and Military Collection
The Bundaberg & District Historical & Museum Society
The Chinchilla Historical Society
The MacArthur Museum Brisbane
The Minerals Heritage Museum
The Mulgrave Settlers Museum
The Pioneer Valley Museum at Mirani
The Queensland Women's Historical Association
The University of Queensland Art Museum
Toowoomba Historical Society
Toowoomba Regional Art Gallery
Transport and Main Roads Heritage Centre
True Blue Visitor Information Centre
United Grand Lodge of Queensland
University of Queensland Anthropology Museum
University of Southern Queensland Historical Archives
University of the Sunshine Coast Gallery
Victoria Barracks Historical Society, Brisbane
Victoria Barracks Museum
Vintage Museum
Warwick Art Gallery
Wide Bay Hospital Museum Society
Winton District Historical Society and Museum
Yugambeh Museum Language & Heritage Research Centre

South Australia

Adelaide City Council
Adelaide City Council Archives
Anne & Gordon Samstag Museum of Art

Architecture Museum - University of South Australia
Army Museum of South Australia
Art & Heritage Collections
Artlab Australia
Barossa Regional Gallery
Bay Discovery Centre
Botanic Gardens of Adelaide
Carrick Hill
Chas Roe Electronics Museum
Christian Brothers College Archives Museum
City of Charles Sturt - Cultural Heritage
Contemporary Art Centre of SA
Embroiderers' Guild Museum
Flinders University Art Museum
History Trust of South Australia
Loxton Historical Village
Mannum Dock Museum of River History
Mary Mackillop Penola Centre
Melrose Districts History Society
Millicent National Trust - Living History Museum
National Motor Museum
National Railway Museum
National Trust of SA - Olivewood Estate
National Trust of South Australia
National Trust of South Australia
National Trust of South Australia Goolwa Branch
Performing Arts Collection S.A.
South Australian Aviation Museum
South Australian Museum
The Hahndorf Academy
The Sheep's Back Museum
Uleybury School Museum
Unley Museum
Urrbrae House Historic Precinct
Visual Arts Touring Country Arts SA
Whyalla Maritime Museum

Tasmania

Academy Gallery - University of Tasmania
Arts Tasmania
Bass & Flinders Centre
Beaconsfield Mine & Heritage Centre
Circular Head Heritage Centre
Design Forum Tasmania

Friends of Ida Bay Historical Society
Friends of Soldiers Memorial Avenue
Hobart City Council
Levendale and Woodsdale History Room
Maritime Museum of Tasmania
Museum of Old and New Art
Narryna Heritage Museum
National Trust of Australia (Tasmania)
Queen Victoria Museum & Art Gallery
Royal Hobart Hospital Graduate Nurses Association
St Helens History Room
Tasmanian Cricket Museum
Tasmanian Museum & Art Gallery
Tasmanian Wool Centre
Ulverstone History Museum
University of Tasmania Cultural Activities Committee
UTAS Academy of the Arts
Wesley Hobart Museum
Woolmers Estate

Victoria

Academy of Mary Immaculate
Alfred Hospital Nurses League
Allansford Cheese World Museum
Altona Laverton Historical Society
Andrew Ross Museum
ANZ Banking Museum
Ararat & District Historical Society
Ararat Regional Art Gallery
Arts Space Wodonga
Australian Centre for Democracy @ Eureka
Australian Centre for Effective Partnerships
Australian Centre for the Moving Image
Australian Gallery of Sport and Olympic Museum
Australian Gliding Museum
Australian Racing Museum
Australian Railway Historical Society
Australian Red Cross (Heritage)
B24 Liberator Memorial Restoration Fund
Bacchus Marsh Blacksmiths Cottage & Forge Complex
Baking Industry Association of Australia Ltd
Ballarat Tramway Museum
Banyule City Council
Beleura House & Garden - The Tallis Foundation
Benalla Art Gallery

Benalla Costume & Pioneer Museum
 Bendigo Art Gallery
 Berwick Mechanics Institute & Free Library
 Blessed Sacrament Congregation & St Francis' Church Heritage Centre
 Bright & District Historical Society
 Brighton Historical Society
 Buchan Heritage Group Inc
 Buda Historic Home & Garden
 Bundoora Homestead Art Centre
 Burke Museum & Historical Precinct
 Burrinja (Dandenong Ranges Community Cultural Centre)
 Camperdown & District Historical Society
 Canine Museum Trust
 Casey-Cardinia Library Corporation
 Casterton & District Historical Society
 Castlemaine Art Gallery & Historical Museum
 Caulfield Grammar School Archives
 Central Goldfields Art Gallery
 Charlton Golden Grains Museum
 Chelsea & District Historical Society
 City of Melbourne / City Gallery
 City of Moorabbin Historical Society
 City of Whitehorse
 City of Yarra
 Civil Aviation Historical Society
 Clunes Museum - William Barkell Memorial Arts/History Centre
 Coal Creek Community Park & Museum
 Cohuna & District Historical Society
 Community Cultural Development - City of Whittlesea
 Craft Victoria
 Cranbourne Shire Historical Society
 Creative Hat Interpretation
 Creswick Museum
 Curatorial Services Unit City of Port Phillip
 Daylesford & District Historical Society
 Deaf Children Australia
 Deakin University Art Collection & Galleries
 Dingley Village & District Historical Society
 Doncaster Templestrowe Historical Society
 East Gippsland Historical Society
 Echuca Historical Society
 Essendon Football Club Hall of Fame
 Euston/Robinvale Historical Society
 Fed Square Pty Ltd
 Fire Services Museum of Victoria
 Flagstaff Hill Maritime Village
 Footscray Community Arts Centre
 Ford Discovery Centre
 Foster & District Historical Society
 Friends of Churchill Island Society
 Friends Of The Cerberus
 Friends of the Geelong Botanic Gardens
 Friends of the RAAF Museum
 Geelong Gallery
 Geoffrey Kaye Museum of Anaesthetic History
 George Evans Museum
 Gippsland Armed Forces Museum
 Gippsland Art Gallery
 Gippsland Regional Maritime Museum
 Glen Eira City Council
 Glen Eira Historical Society
 Glenelg Shire Council Cultural Collection
 Golden Dragon Museum
 Golf Society of Australia
 Grainger Museum
 Harry Brookes Allen Museum of Anatomy and Pathology
 Hastings-Western Port Historical Society
 Hawks Museum
 Heide Museum of Modern Art
 Henry Forman Atkinson Dental Museum
 Heritage Hill Museum & Historic Gardens
 Horsham Regional Art Gallery
 Ian Potter Museum of Art
 Inglewood Development and Tourism Committee
 Italian Historical Society - Co.As.It
 Jewish Holocaust Centre
 Jewish Museum of Australia
 Kaleidio Pty Ltd
 KE Software Pty Ltd
 Kerang Historical Society Inc
 Kiewa Valley Historical Society
 Knox Historical Society
 Koorie Heritage Trust
 Koroit & District Historical Society
 Krowathunkooloong Keeping Place (GEGAC)
 Kyneton Museum
 La Trobe University Art Museum
 Lake Goldsmith Steam Preservation Association
 Leongatha & District Historical Society

Loreto Mandeville Hall Toorak
 Mallacoota & District Historical Society
 Man From Snowy River Folk Museum
 Mansfield Historical Society
 Maritime Heritage Association of Victoria
 Maroondah Art Gallery
 Mary Mackillop Heritage Centre
 Maryborough-Midlands Historical Society
 McClelland Gallery + Sculpture Park
 Medical History Museum
 Medical History Museum
 Melbourne Cricket Club Museum
 Melbourne Girls Grammar School
 Melbourne's Living Museum of the West
 Melton & District Historical Society
 Merrigum Historical Society
 Monash Faculty of Science Instrument Collection
 Monash Gallery of Art
 Monash Science Centre
 Monash University Museum of Art
 Mornington & District Historical Society
 Mornington Peninsula Regional Gallery
 Murtoa & District Historical Society & Community Museum
 Museum of Chinese Australian History
 Museum Victoria
 Nagambie Historical Society
 National Alpine Museum of Australia
 National Gallery of Victoria
 National Sports Museum
 National Vietnam Veterans Museum
 National Wool Museum
 Nepean Historical Society
 NETS Victoria
 Nillumbik Shire Council Arts and Culture
 Nobelius Heritage Park & Emerald Museum
 Old Gippsdown - Gippsland Heritage Park
 Old Melbourne Gaol - Crime & Justice Experience
 Omeo Historical Society
 Packaging Council of Australia
 Padua College
 Parks Victoria
 Paynesville Maritime Museum
 Phillip Island & District Historical Society
 Port Fairy Historical Lifeboat Station
 Port Fairy Historical Society Inc
 Port Melbourne Historical & Preservation Society
 Port of Echuca
 Port Welshpool & District Museum
 Presbyterian Ladies College
 Professional Historians Association (Vic)
 Public Galleries Association of Victoria
 Puffing Billy Preservation Society
 Pyramid Hill & District Historical Society
 Queenscliffe Historical Museum
 Queenscliffe Maritime Museum
 R.A.A.F. Museum
 Richmond Burnley Historical Society
 Rippon Lea Estate - National Trust of Australia (Vic)
 RMIT Design Archive (City Campus)
 RMIT Design Archives
 RMIT Gallery
 Royal Australasian College of Surgeons
 Royal Australian & NZ College of Obstetricians & Gynaecologists Museum
 Royal Botanic Gardens Melbourne Library
 Royal Children's Hospital Archives
 Royal Flying Doctor Service
 Royal Historical Society of Victoria
 Royal Melbourne Hospital Archives
 Santa Maria College
 Scout Heritage Victoria
 Seymour and District Historical Society
 Shepparton Art Gallery
 Shrine of Remembrance
 St Kilda Historical Society
 Stanley Athenaeum & Public Room
 State Library of Victoria
 Stawell Historical Society
 Stratford & District Historical Society
 Sunshine & District Historical Society
 Surfworld Torquay
 Swan Hill Regional Art Gallery
 Swinburne University of Technology Library Studies Program
 Talbot Arts & Historical Museum
 Tarrawarra Museum of Art
 Tatura and District Historical Society
 The Arts Centre-Performing Arts Collection
 The Australian National Aviation Museum
 The Central Highlands Tourist Railway
 The Centre for Cultural Materials Conservation

The Cyril Kett Optometry Museum
The Dax Centre
The Duldig Studio
The Gallery @ BACC
The Johnston Collection
The Melbourne Athenaeum Library
The Peninsula School
The Sovereign Hill Museums Association
Town Hall Gallery
Trans-Australia Airlines Museum
Trinity College - Art & Archives
Uniting Church Archives
University of Ballarat Art and Historical Collections
VALA Libraries - Technology and the Future
Victoria Police Museum
Victorian Jazz Archive
Victorian Telecommunications Museum
Villa Alba Museum
Walhalla Heritage & Development League
Wandin and District Historical Museum Society
Wangaratta Art Gallery
Wangaratta Historical Society
Warracknabeal Historical Society
Warrnambool & District Historical Society
Western Bulldogs
Whittlesea Historical Society
Woody Yaloak Historical Society
Wonthaggi & District Historical Society
Woods Point Museum
Yackandandah & District Historical Society
Yarra Ranges Regional Museum

Western Australia

AEG Ogden (Perth) Pty Ltd
Albany Historical Society
AMMPT Western Region
Army Museum of Western Australia Foundation
Art Gallery of Western Australia
Art on the Move
Artgeo Cultural Complex
Augusta Historical Museum
Avondale Discovery Farm
Bayswater Historical Society
Benedictine Community of New Norcia

Berndt Museum of Anthropology
Beverley Aeronautical Museum
Birdwood Military Museum Society
Bridgetown Historical Society
Brookton & District Historical Society
Broome Historical Society
Broomehill Historical Society
Bruce Rock Museum
Bunbury Cathedral Grammar School
Bunbury Historical Society
Busselton Historical Society
Canning Districts Historical Society
Carnamah Historical Society
Chisholm Catholic College
Chung Wah Historical Group
City of Belmont
City of Bunbury Museum
City of Cockburn - Public Library & Information Service
City of Fremantle Art Collection
City of Gosnells Museum - Wilkinson Homestead
City of Joondalup
City of Kalgoorlie-Boulder
City of Melville Museum & Local History Service
City of Nedlands Local Studies Library Service
City of Perth Art & Cultural Heritage Collection
City of Vincent
City of Wanneroo
Claremont Museum
Coalfields Museum (Collie)
Collie Heritage & Menshed Group Inc
Cranbrook Museum Society
Cunderdin Museum
Deanmore Primary School
Dowerin District Museum
Eastern Goldfields Historical Society
Ex Victoria District Hospital Staff Association
Fellowship of Australian Writers WA
Fire & Emergency Services Education & Heritage Centre
Fremantle Prison
Geraldton Historical Society Inc
Geraldton Regional Art Gallery
Hale School
Harvey Districts Historical Society Museum
Historical Society of Cockburn
History House Museum

Irwin District Historical Society
Jarrahdale Heritage Society
John Curtin Prime Ministerial Library
Juluwarlu Aboriginal Corporation
Jurien Interpretation Centre Inc
Kalamunda & District Historical Society
Katanning Art Gallery
Koorla & District Museum & Historical Society
Kwinana Heritage Group
Lake Grace Australian Inland Mission Hospital Museum
Lawrence Wilson Art Gallery
Machinery Preservation Club of WA
Mandurah Community Museum
Mandurah Historical Society
Mangkaja Arts Resource Agency
Morawa District Historical Society
Mowanjum Art & Culture Centre
Mt Flora Regional Museum
Mundaring District Museum
Murdoch University Art Collection
Museum of Natural History
National Trust of Australia (WA)
Newcastle Gaol
Newdegate Hainsworth Building & Museum
Northam Heritage Forum Inc
Old Court House Law Museum
Old Kobeelyans' Association
Ongerup & Needilup District Museum
Penrhos College
Perth College
Perth Institute of Contemporary Arts
RAAFA Aviation Heritage Museum of WA
Rail Heritage WA
Ravensthorpe Historical Society
Residency Museum York
Rockingham District Historical Society
Rottneest Island Museum
Royal Perth Hospital Museum
Royal Western Australian Historical Society
Santa Maria College
Scout Heritage Centre of Western Australia
Shark Bay World Heritage Discovery Centre
Shire of Kojonup
Shire of Manjimup - Timber & Heritage Park

Shire of Roebourne Local History Office
Shire of Sandstone
Shire of West Arthur
Shire of Woodanilling
Sisters of Mercy - Perth
Sisters of St John of God Heritage Centre
South West Aboriginal Land & Sea Council
Subiaco Museum
Swan Guildford Historical Society
The Anglican Church of Australia - Diocese of Perth - Archives
The Embroiderers Guild of WA
The Friends of Eden Vale
The Great Beyond Explorers Hall of Fame
The Grove Library
The Kodja Visitor Centre
The Mental Health Museum WA
The Merredin Museum & Historical Society
The Royal Australian Artillery Historical Society of WA
The St John Museum
The Tractor Museum of WA
The Western Australia Police Historical Society
Town of Kwinana
WA Medical Museum
Waroona Historical Society
Wave Rock Management - Hyden Hotel
Wesfarmers Limited
Western Australian Cricket Association (WACA) Museum
Western Australian Museum
Whale World
Whiteman Park
Wongan Hills & District Museum and Historical Society
Wubin Wheat Bin Museum
Wyalkatchem CBH. Agricultural Museum
Yarloop Workshops
Yilgarn History Museum
York Research & Archival Centre
Young Australia League

International

Ozbadge
Vernon Systems Ltd